

Voiding Dysfunction Secondary to a Primary Uterine Cervix Lymphoma

Sanz Pablos, J; López Carrasco, I; Prieto Pozuelo, M.

Pelvic floor department, Gynecology. HM, Hospitales Madrid, Spain.



Affiliations to disclose:

Q pharma.

Funding for speaker to attend:

- ☐ Self-funded
- ☐ Institution (non-industry) funded
- ☒ Sponsored by: **Q pharma**

Voiding dysfunction secondary to a primary uterine cervix lymphoma

Sanz Pablos, J; López Carrasco I; Prieto Pozuelo, M.

Pelvic floor department, Gynecology, HM Hospitales. Madrid. Spain.

47-year-old.

Difficulty in initiating urination, sensation of urinary urgency and discomfort with sexual intercourse.

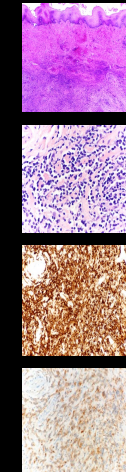
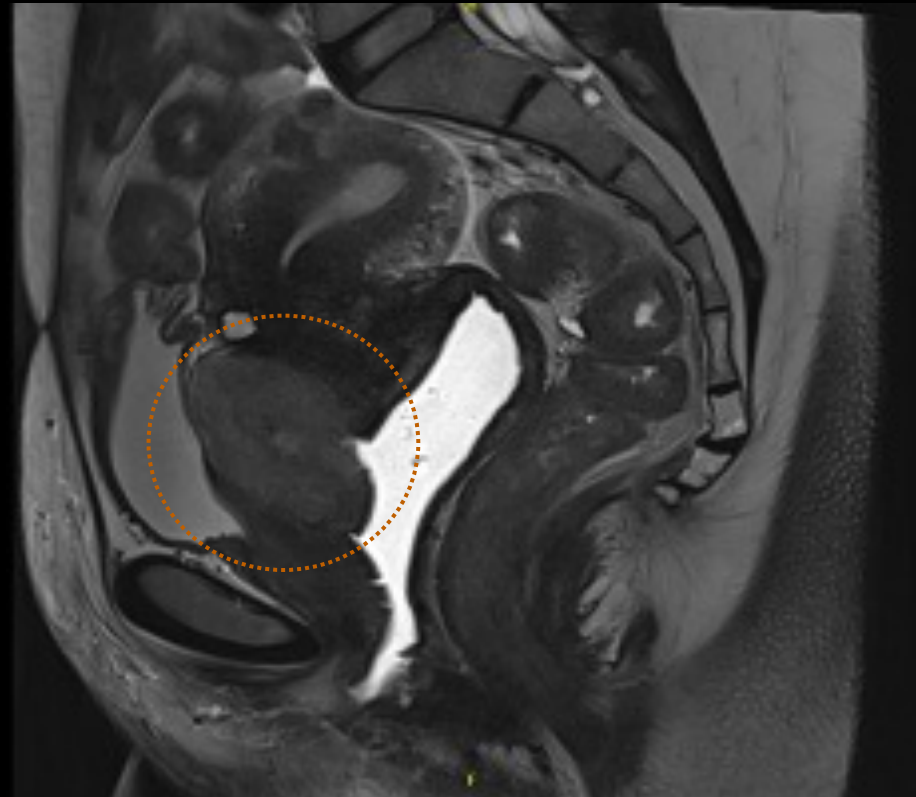
1 / Physical examination and US

Solifenacin 6mg and tamsulosin 0.4mg

2 / MRI and UC

3 / Biopsy

4 / Treatment



Lymphocytes with atypia and mature appearance. Stromal sclerosis. CD20 positive (B lymphoma). BCL2, BCL6 y CD10 positive (diffuse pattern follicular lymphoma).