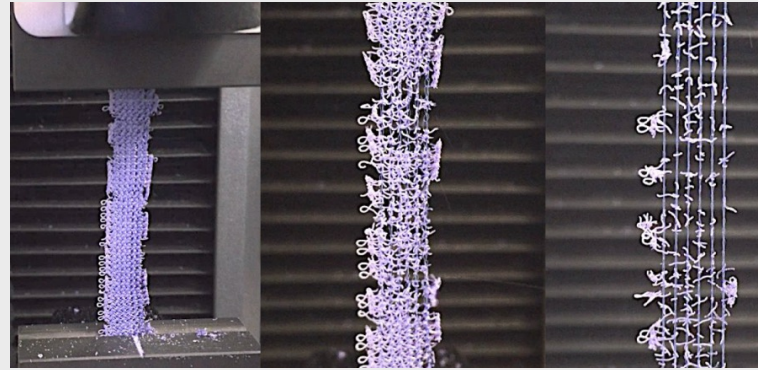
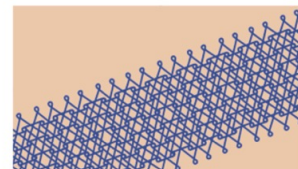


A new partially absorbable suture delivery system ensures high anatomical efficacy and safety in POP surgery, avoiding erosion and chronic pain.

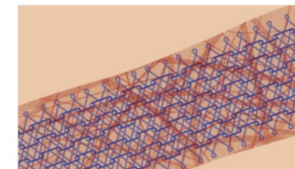
Procedure: Unilateral sacrospinous fixation using a partially absorbable implant + anterior colporrhaphy + posterior colporrhaphy/perineoplasty.



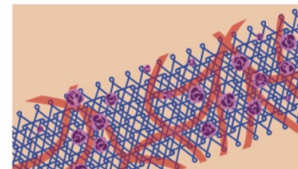
Non-woven polypropylene filaments remaining after resorption of the degradable part.



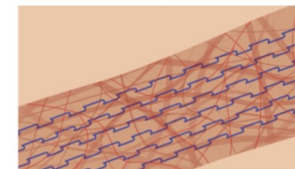
Implantation



Fibrosis and neovascularization 30 days



Granulation
14 days

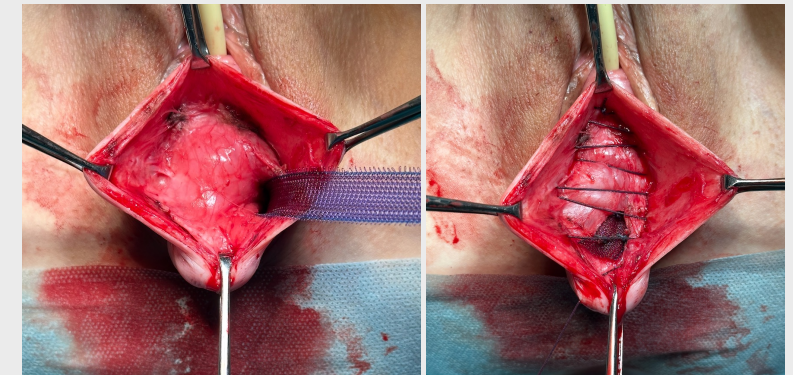


Fibrosis and resorption of the degradable part
60-180 days

Tissue response and integration timeline of the partially absorbable implant (0–180 days).

Results

- **Anatomical success: 96.7%** at 12 months ($p < 0.001$).
- **Recurrence:** 1 complete relapse (3.3%); 3 asymptomatic cystocele recurrences (10%).
- **Complications:** **No implant erosions** or chronic pelvic pain.
- **Quality of life:** Significant improvement in all PFDI-20 subscales ($p < 0.001$).



Implant placement and fixation during unilateral sacrospinous fixation.



Shakhaliyev R., Shkarupa D., Shulgina S., Kubin N.

Saint-Petersburg State University Hospital

www.ics-eus.org/2025/abstract/26284