

THE ROLE OF RETROGRADE URETHROGRAPHY AS A PREDICTOR OF EARLY RECOVERY OF URINARY CONTINENCE AFTER ROBOT ASSISTED LAPAROSCOPIC RADICAL PROSTATECTOMY

Hypothesis / aims of study

To investigate the role of retrograde urethrography as a predictor of recovery of urinary continence after robot assisted laparoscopic radical prostatectomy (RALP).

Study design, materials and methods

A total 54 patients who underwent RALP from March 2010 and January 2013 were investigated. A retrograde urethrography (RGU) at 7 to 10 days after operation. 33 patients with beak shaped, sufficiently long and regular margined urethra on RGU were defined as Group 1, and 21 patients without those characteristics were defined as Group 2 (figure 1) . Recovery of urinary continence was defined as usage of less than 1 diaper per day.

Results

Preoperative demographics two groups except PSA were comparable (Table 1). 12.1% (4/33), 51.5% (17/33) and 87.9% (19/33) of patients in group 1 had recovery of continence at 1, 3, 6months after removal of catheter, respectively. It was significantly shorter than recovery rate of group 2 [9.5% (2/21), 28.6% (6/21), 66.7% (14/21) at 1, 3, 6 months, respectively] (table 2).

Conclusion: The beak shaped, sufficiently long and regular margined urethra on RGU can be used as a predictor of early continence recovery.

Interpretation of results

Post-operative RGU with beak shape and regular margined urethra can predict that the patient will have early recovery of continence. And surgeon may use this parameter as prediction of postoperative outcome of patients.

Concluding message

The beak shaped, sufficiently long and regular margined urethra on RGU can be used as a predictor of early continence recovery.

Figure 1. retrograde urethrography

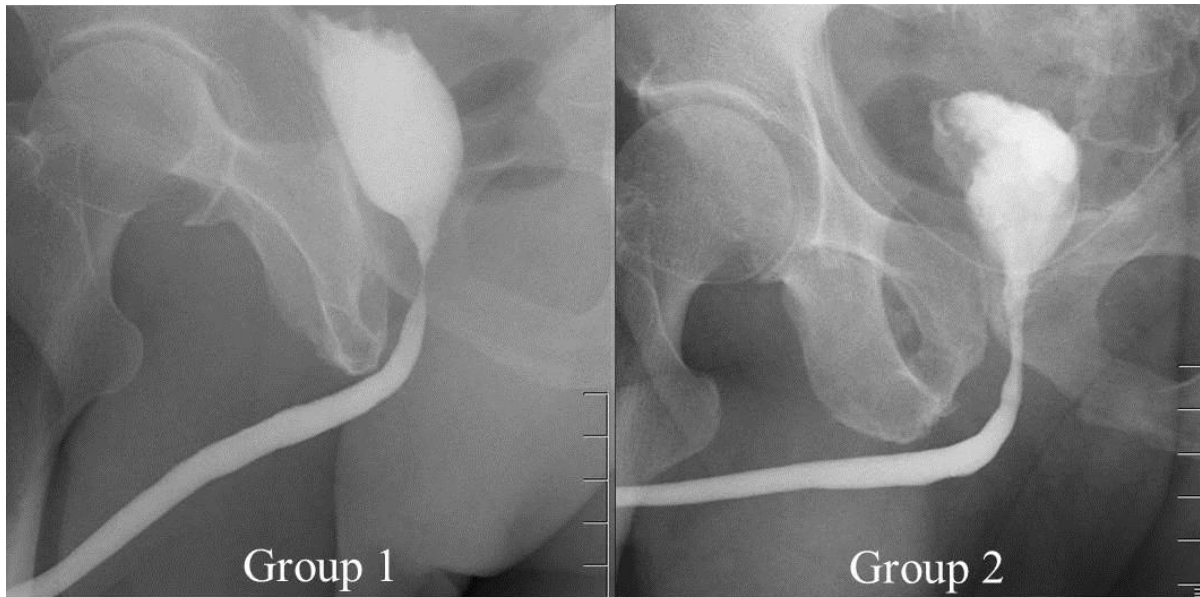


Table 1. baseline demographics

	Group 1	Group 2	p-value
N (person)	33	21	
Age, year	68.0±6.6	68.3±6.4	0.193
PSA, ng/ml	8.53±6.6	12.7±12.8	0.002
Gleason score	7.3±0.75	7.2±0.89	0.517
Prostate volume	31.1±11.6	31.1±12.7	0.425
No of patient with OAB	10	7	0.637
Day of incontinence	102.0±56.9	202.9±227.6	0.008

Table 2. Recovery rate of urinary continence

Period after Foley cath. Removal (months)		1	2	3	4	5	6	12
Recovery rate (%)	Group 1	4/33 (12.1%)	10/33 (30.3%)	17/33 (51.5%)	25/33 (75.8%)	28/33 (84.8%)	29/33 (87.9%)	33/33 (100%)
	Group 2	0	2/21 (9.5%)	6/21 (28.6%)	9/21 (42.9%)	10/21 (47.6%)	14/21 (66.7%)	20/21 (95.2%)

Disclosures

Funding: nothing **Clinical Trial:** Yes **Public Registry:** No **RCT:** No **Subjects:** HUMAN **Ethics not Req'd:** this is a retrospective and observational study, This study does not violate normal clinical treatment and follow up strategy. **Helsinki:** Yes **Informed Consent:** Yes