

## ICS Educational Module Powerpoint Template Guidelines

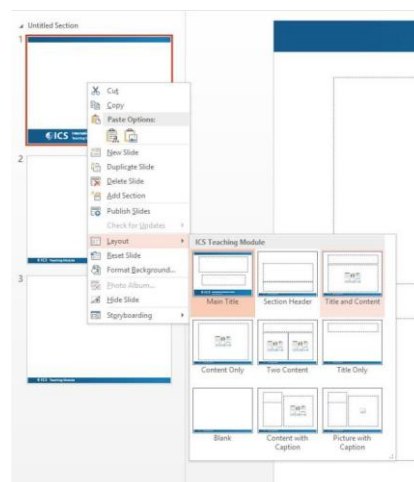
Approved ICS Educational Modules are required to be presented using the ICS Educational Module PowerPoint Template.

The template has been created to present educational information in the clearest possible way with simple styling that does not distract from the presented material and sustains the brand and validity of the International Continence Society.

### Master Slides

Every slide in the presentation must use one of the master slides provided in order to continue the uniform appearance throughout. To select a master slide right click on the slide in the slide viewer on the left of the screen, click 'Layout' and then your choice from the master slide window as shown to the right:

The use of master slides enables uniformly sized and positioned content, changes to the layout should be avoided unless absolutely necessary. The background colour should always remain white as this will provide the most legible text.



### Use of font

All text should remain in the clearly legible template font of Calibri.

Font sizes should automatically reduce in size if required to fit during text input, although size 14 should be considered the minimum usable font size for clarity.



### Use of colour

The template contains a colour theme that features the three ICS brand colours plus four additional colours.





All text should appear in the dark ICS blue except where emphasis is required lighter blue or orange can be used.

The ICS Brand Colours should be the first choice of colour and use of colour should be limited to these seven colours unless necessary for illustrative purposes e.g. graphs that require more colours.

#### ICS Brand Colours:

		
R: 3 G: 88 B: 140	R: 5 G: 124 B: 188	R: 255 G: 127 B: 0

#### Additional Colours:

			
R: 165 G: 165 B: 165	R: 240 G: 173 B: 78	R: 201 G: 48 B: 44	R: 68 G: 157 B: 68